



Catalogo Serie 40 Cava 8
Catalogue size 40 Groove 8





Il Sistema Milper è costituito da una ampia gamma di Profili Strutturali e Tubolari in Alluminio (più di 150 profili) e dai relativi accessori (più di 1500 articoli).

Tutti i profili e gli accessori sono realizzati secondo un processo produttivo 100% Made in Italy, utilizzando alluminio anodizzato di alta qualità (lega primaria 6060TG).

Frutto di decenni di esperienza, il Sistema Milper trova impiego in tutti i settori industriali e in una varietà illimitata di applicazioni.

Alla base della nostra struttura aziendale c'è un ufficio tecnico in grado di assistere i clienti in tutte le necessità, dalla consulenza, alla progettazione fino allo sviluppo del prodotto.



The Milper System consists of a wide range of Structural and Tubular Aluminium Profiles (more than 150 profiles) and related accessories (more than 1500 items).

All profiles and accessories are made according to a 100% Made in Italy production process, using high quality anodized aluminium (primary alloy 6060TG).

As a result of decades of experience, the Milper System is used in all industrial sectors and in a unlimited variety of applications.

At the base of our corporate structure there is a technical office able to assist customers in all needs, from consultancy, to design and product development.



Indice

Index

Capitolo 1 - Chapter 1

Sistemi di fissaggio cava 8 - Fixing systems groove 8

Capitolo 2 - Chapter 2

Profili Strutturali in Alluminio serie 45 cava 8

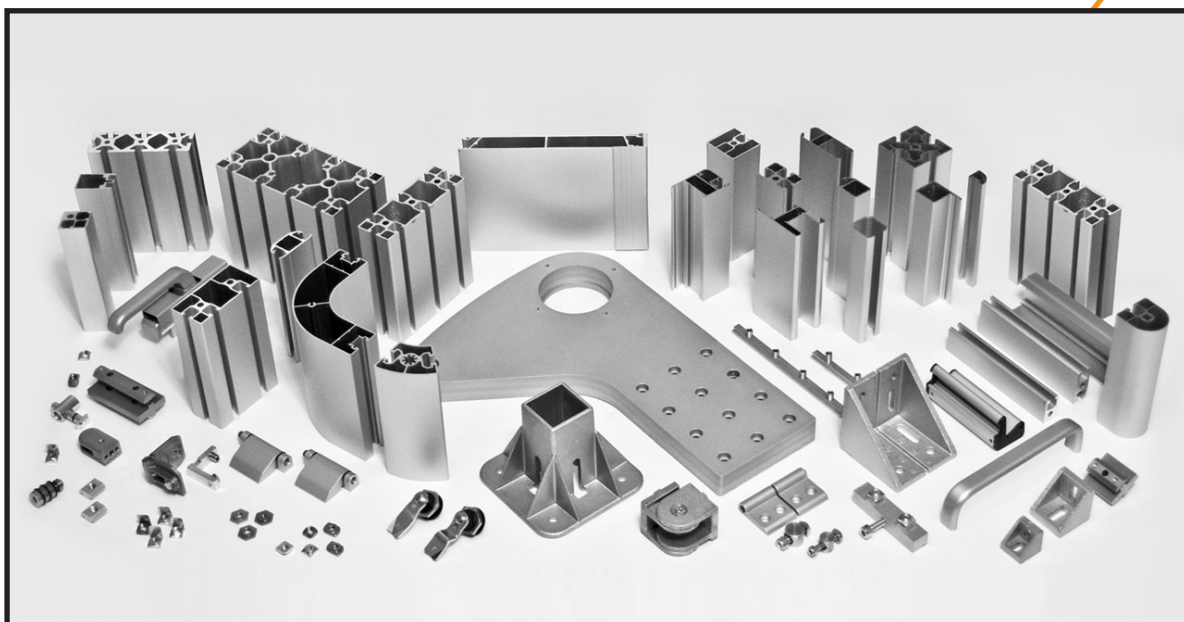
Structural Aluminium Profiles size 45 groove 8

Capitolo 3 - Chapter 3

Accessori per profili cava 8 - Profiles accessories groove 8

Accessori per chiusura profili - Profiles gripping accessories |

Accessori di fissaggio - Fixing accessories | Giunzioni - Joints





Capitolo 1 - Chapter 1

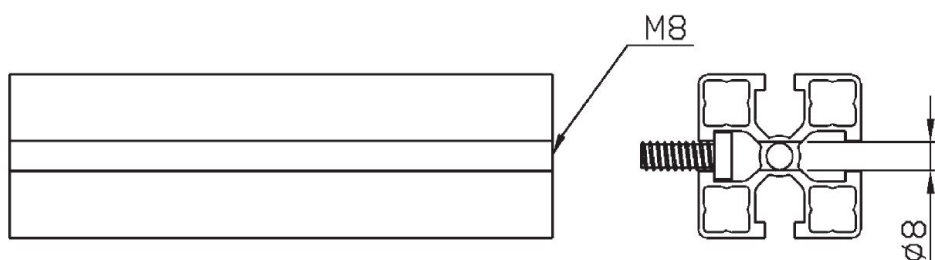
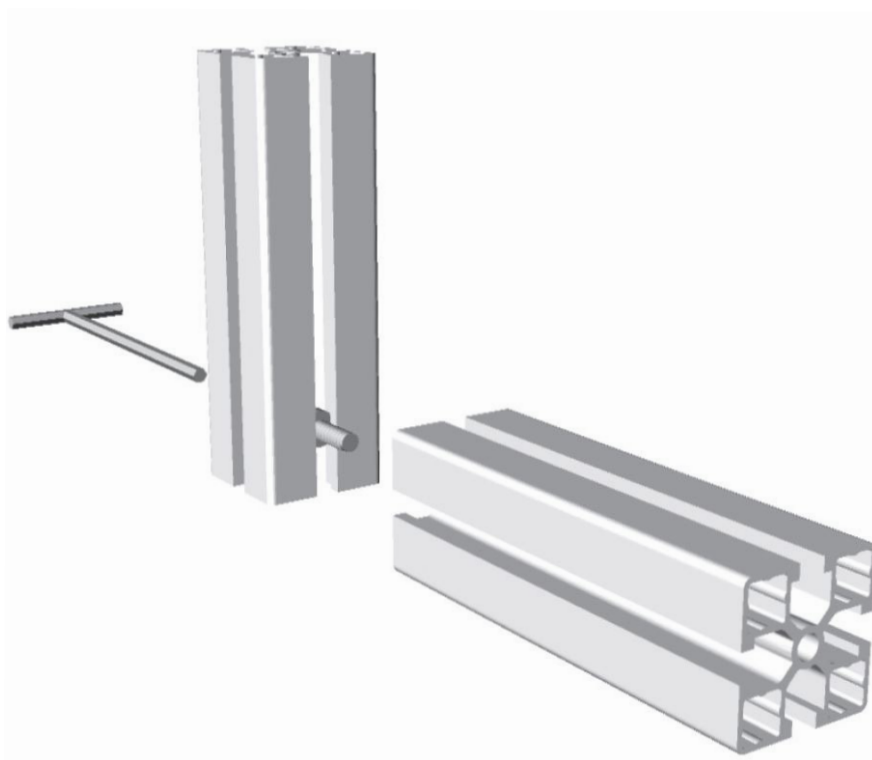
Sistema di fissaggio cava 8 - Fixing systems groove 8

FISSAGGIO SEMPLICE CON VITA IN CAVA

Questo sistema di fissaggio è il più semplice e veloce. Necessita solamente di una vite a brugola M8 a testa ribassata. Sul profilo che alloggia la vite sarà sufficiente eseguire un foro da 8 mm, mentre sul profilo opposto sarà necessaria una filettatura M8 sul foro centrale.

SIMPLE FIXING BY SCREW IN GROOVE

This fixing system is the most simple and quick. It will only be necessary an allen screw M8 flath head. On the profile holding the screw it will be sufficient make a 8 mm, while on the other profile it will be required a M8 thread on the central hole.



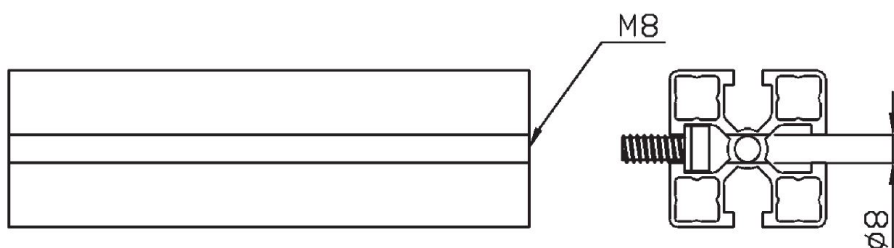
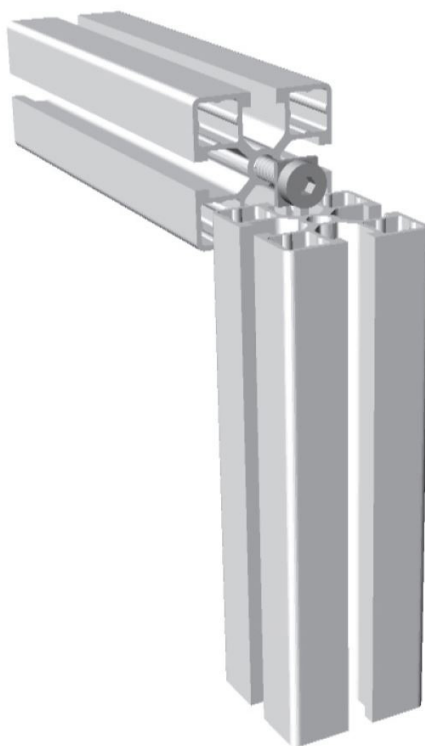
FISSAGGIO SEMPLICE CON RONDELLA QUADRA

Questo sistema di fissaggio migliora l'appoggio della vite aumentando la tenuta del fissaggio stesso. Necessita di una vite a brugola M8 a testa ribassata e di una rondella quadra (cod. 1.28.21.0005).

Sul profilo che alloggia la vite sarà sufficiente eseguire una foratura da 8 mm, mentre sul profilo opposto sarà necessaria una filettatura M8 sul foro centrale.

SIMPLE FIXING BY SQUARE WHASHER

This fixing system improves the screw support heightening the fixing thight. It will be necessary a M8 allen screw, flat head, and a square washer (cod. 1.28.21.0005). On the profile holding the screw, it will be sufficient to make a 8 mm hole, while on the other profile it will be required a M8 thread on the central hole



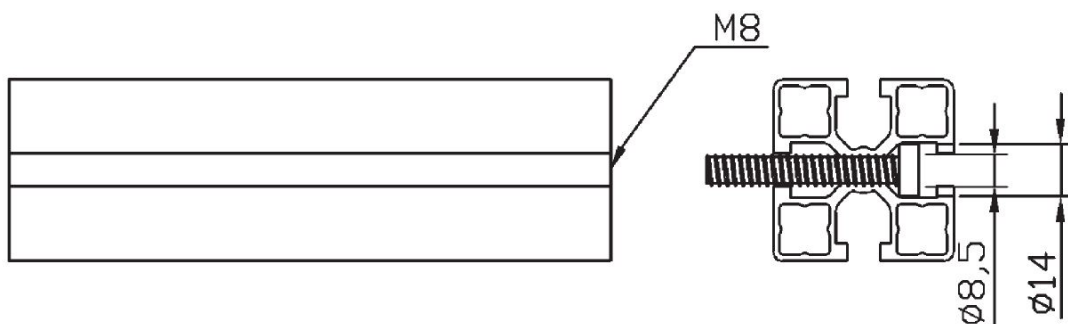
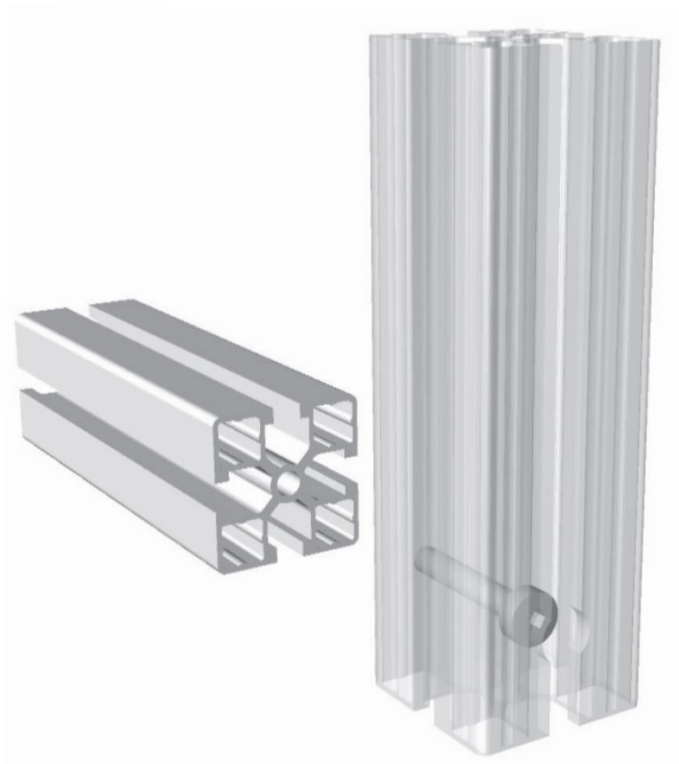
FISSAGGIO SEMPLICE CON LAMATURA

Questo sistema di fissaggio è più resistente rispetto a quello semplice.

Necessita di una vite a brugola M8. Sul profilo che alloggia la vite sarà sufficiente eseguire una lamatura per vite M8, mentre sul profilo opposto è necessaria una filettatura M8 sul foro centrale.

SIMPLE FIXING BY SPOT-FACING

This fixing system is more resistant than simple one. It will be necessary a M8 allen screw. On the profile holding the screw it will be sufficient to make a spot-facing for M8 screw, while on the other profile it will be required a M8 thread on the central hole.



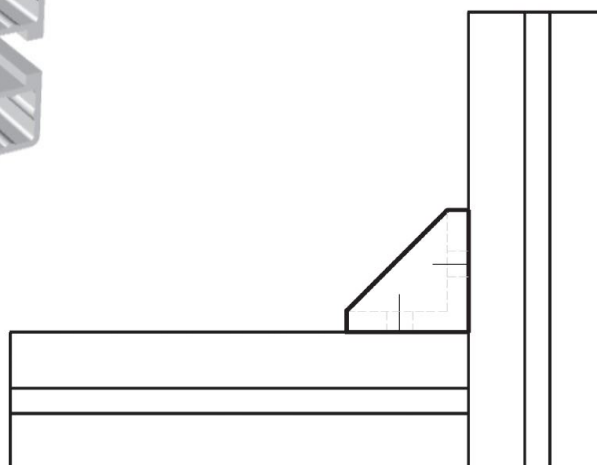
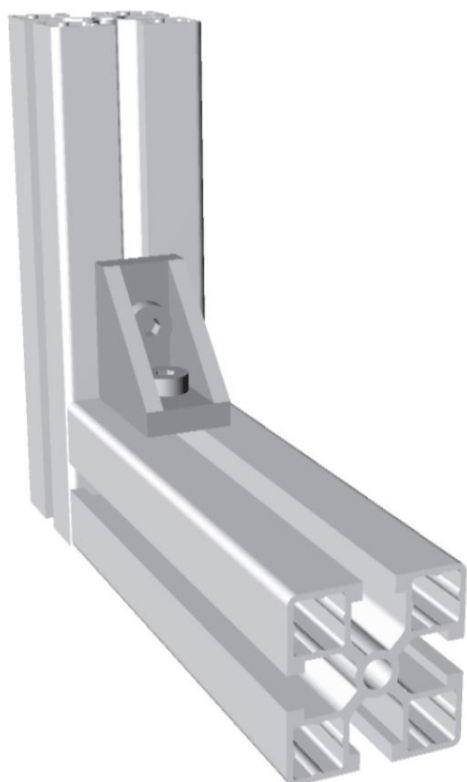
FISSAGGIO SEMPLICE CON SQUADRETTA

Questo sistema di fissaggio può comprendere il fissaggio semplice con l'aggiunta di una squadretta di rinforzo fissa sfruttando la cava dei profili. Per il montaggio della squadretta sono necessarie N°2 viti M8x20 e N°2 dadi M8 (cod. [1.21.20.0004](#)).

SIMPLE FIXING BY BRACKET

This fixing system consist of simple fixing with a support bracket fixed on the groove of the profile.

For assembly of the brackets it will be necessary N°2 M8x20 screw and N°2 M8 nuts (cod. [1.21.20.0004](#))

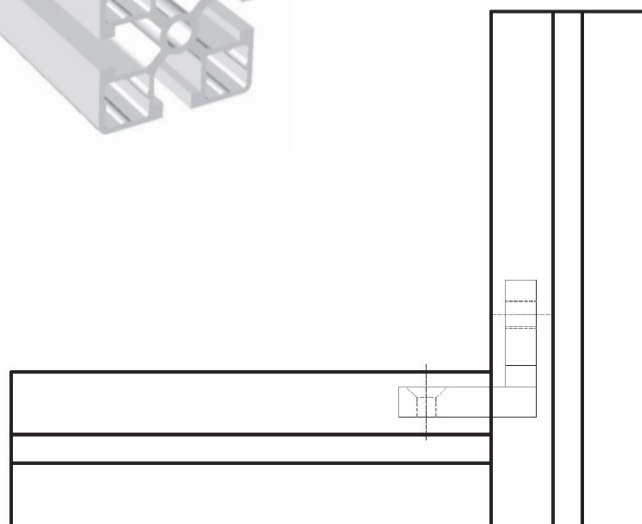
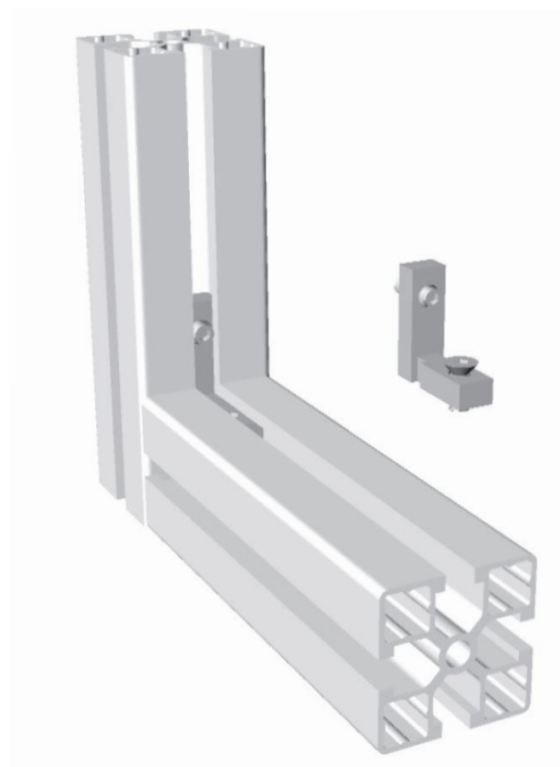


FISSAGGIO SEMPLICE CON GIUNTO INTERNO

Questo sistema di fissaggio può comprendere il fissaggio semplice con l'aggiunta di un giunto interno alla cava dei profili. Per il montaggio sono già compresi una vite a testa svasata e un grano (cod. 1.21.20.0008).

SIMPLE FIXING WITH INTERNAL JOINT

This fixing system consist of simple fixing with an joint internal to the groove of the profiles. To assembly a flared head screw a grain (cod. 1.21.20.0008).

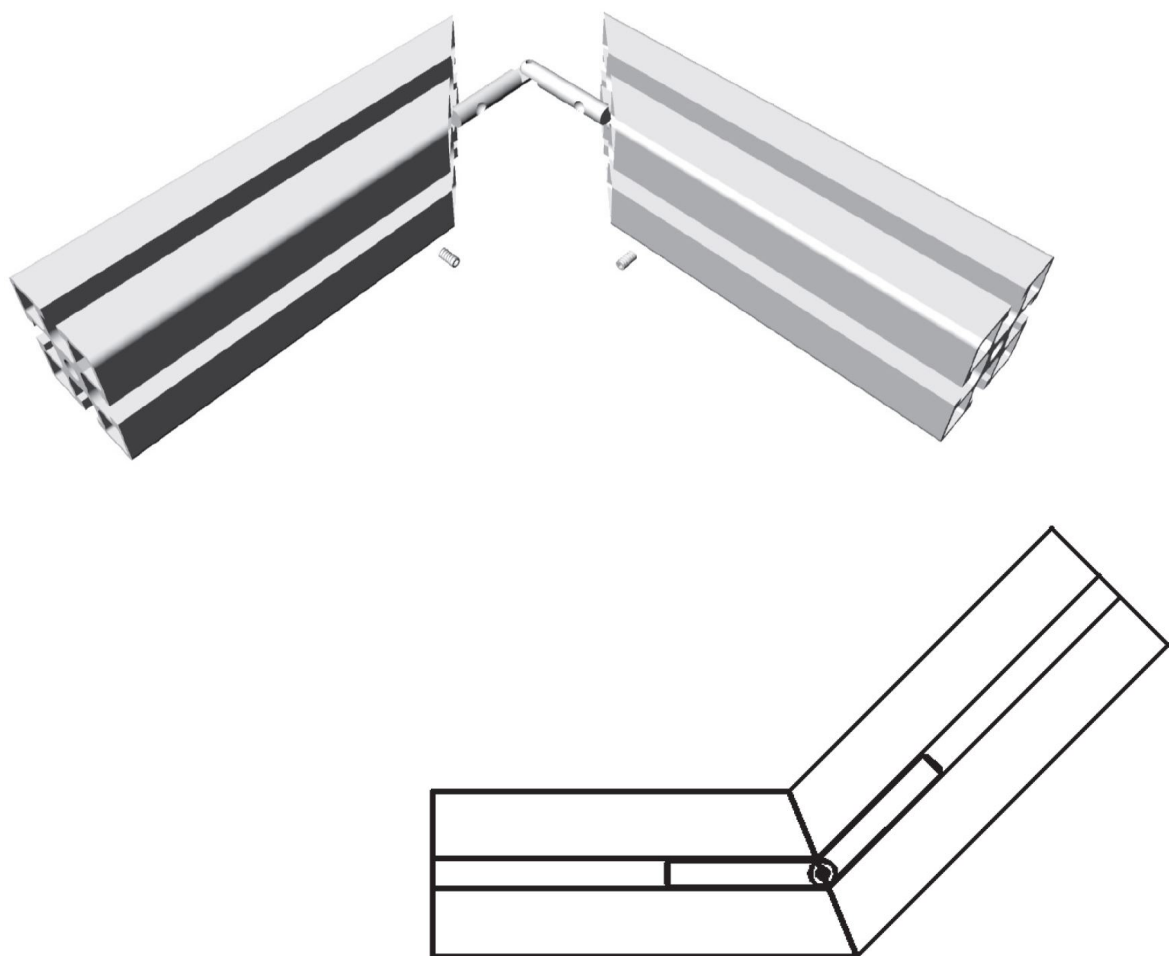


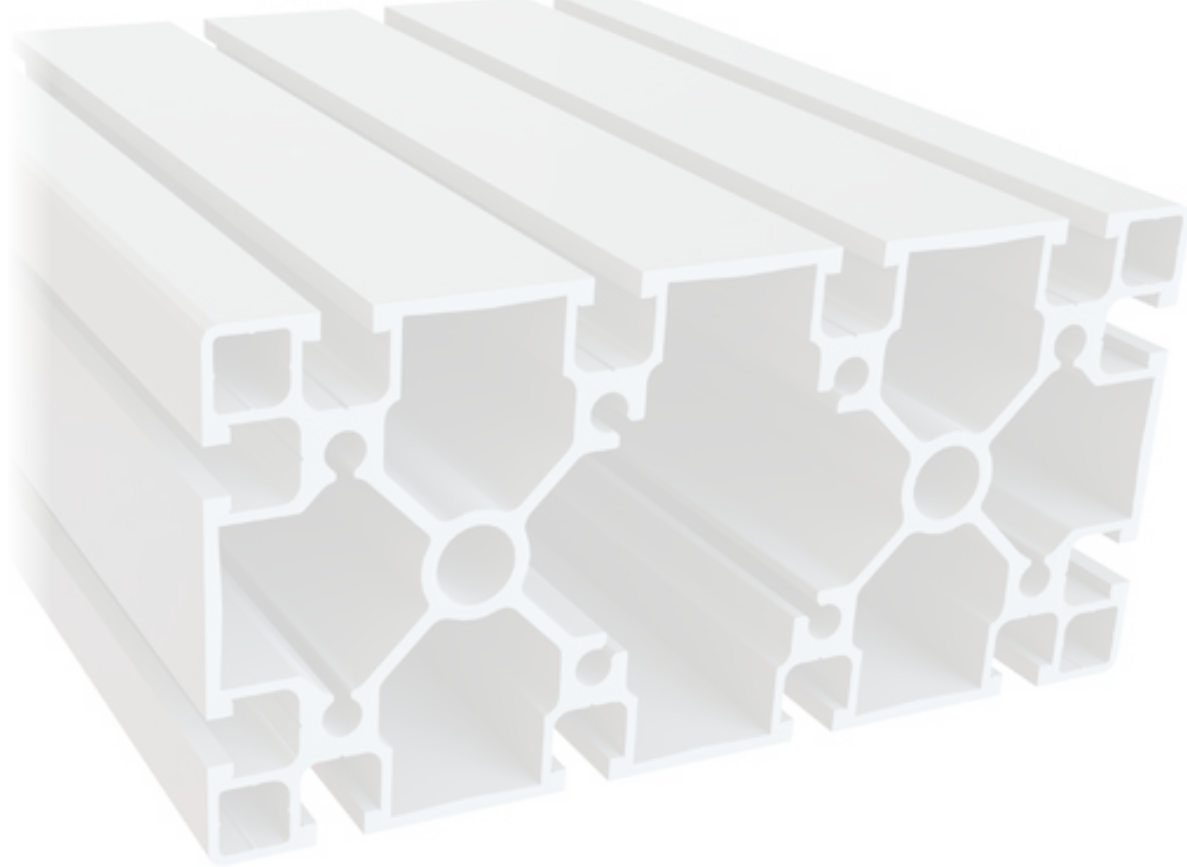
FISSAGGIO SEMPLICE CON GIUNTO SNODATO

Questo sistema di fissaggio viene realizzato per unire i profili con tagli inclinati. Per montare il giunto interno (cod. **1.21.20.0009**) sono necessari due grani a testa conica, fissati su filetti M8 da realizzare su i due profili da unire. Le distanze dei filetti sono da calcolare sulla base dell'angolo di taglio.

SIMPLE FIXING WITH LOOS JOINT

This fixing system is used to joint profiles with inclined edges. To assembly the internal joint (cod. **1.21.20.0009**) it will be necessary two conic head grains, fixed on two M8 threads are to be calculated on the base of the edge corner.





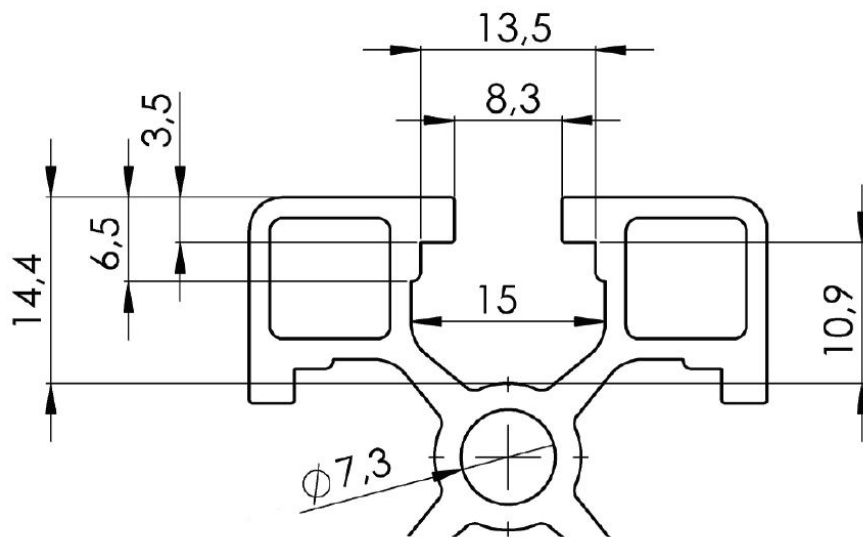
Capitolo 2 - Chapter 2

Profili strutturali in alluminio serie 40 cava 8

Aluminum structural profiles size 40 groove 8

Caratteristiche cava profili

Features of the profile groove



Le dimensioni indicate in questo disegno sono valide per tutti i profili riportati in questo catalogo

The dimension indicated in this draw are valid for all the structural profiles of this catalogue

Cod.1.01.02.0025 Profilo 40x40 Leggero
Profile 40x40 Light

- Flessione
- Flexion
- Punto di inerzia Ix cm⁴ 7.93 Iy cm⁴ 7.93
- Point of inertia

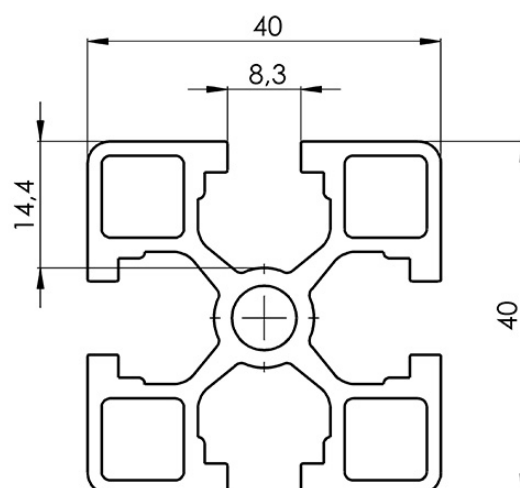
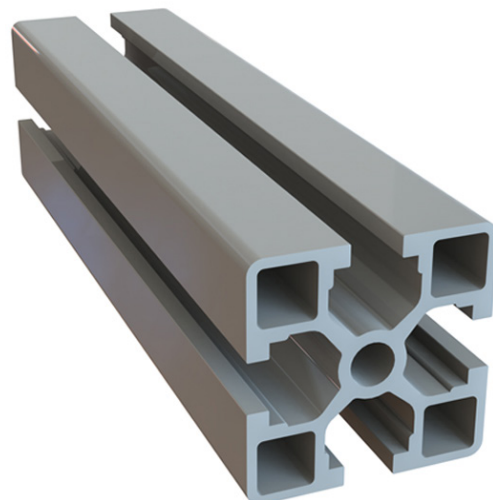
- Momento di resistenza wx cm³ 3.96 wy cm³ 3.96
- Point of hardness

- Sezione 505 mm²
- Section

- Peso 1.38Kg/mt
- Weight

- Finitura standard Anodizzato Argento
- Standard finishing Silver Anodized

- Lunghezza barra 6000 mm
- Bar lenght 6000 mm



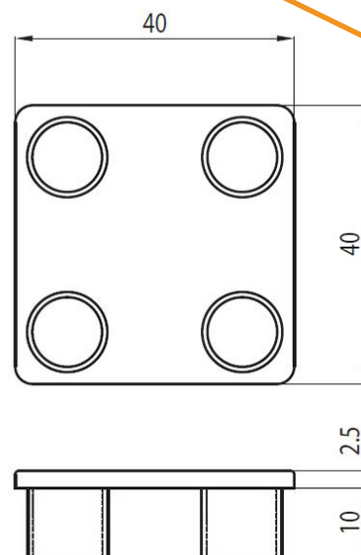
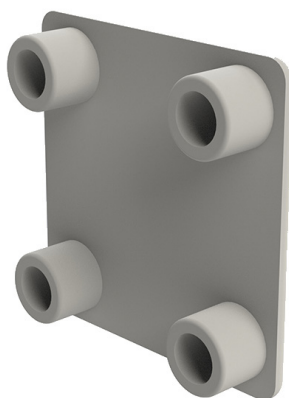
Cod.1.26.11.0009

Tappo Grigio per Profilo 40x40
Grey Cap of Profile 40x40

Cod.1.26.12.0013

Tappo Nero per Profilo 40x40
Black Cap of Profile 40x40

Tipo di materiale: Poliammide
Type of material: Polyamide



Cod.1.01.02.0098 Profilo 40x40 3 Cave
Profile 40x40 3 Groove

- Flessione
- Flexion
- Punto di inerzia Ix cm⁴ 7.65 Iy cm⁴ 7.25
- Point of inertia

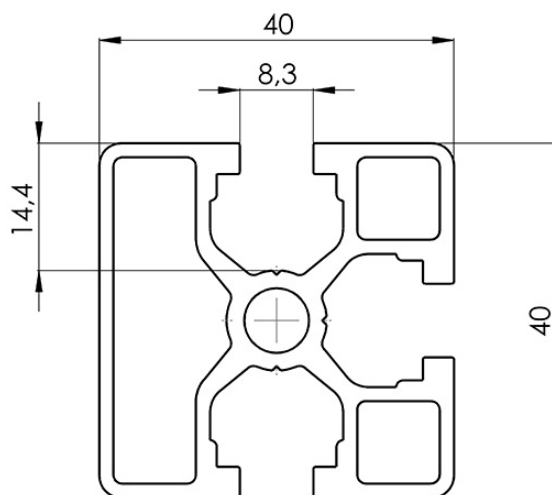
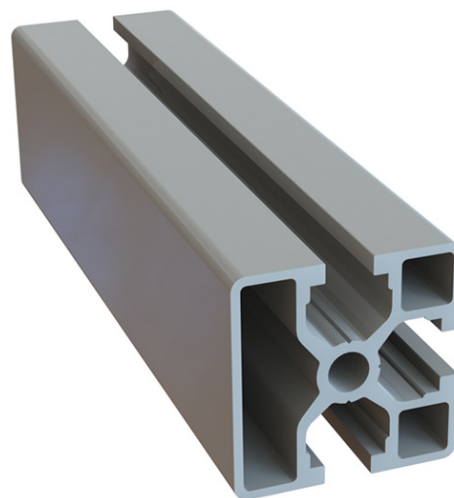
- Momento di resistenza wx cm³ 3.84 wy cm³ 3.63
- Point of hardness

- Sezione 470 mm²
- Section

- Peso 1.29Kg/mt
- Weight

- Finitura standard Anodizzato Argento
- Standard finishing Silver Anodized

- Lunghezza barra 6000 mm
- Bar lenght 6000 mm



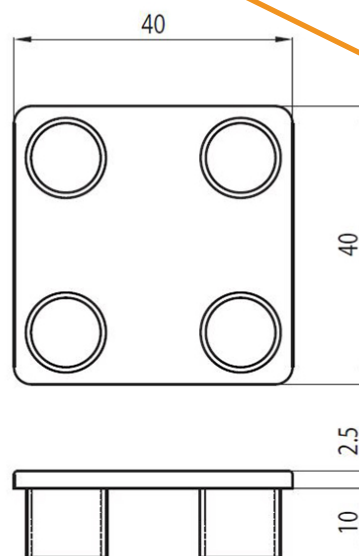
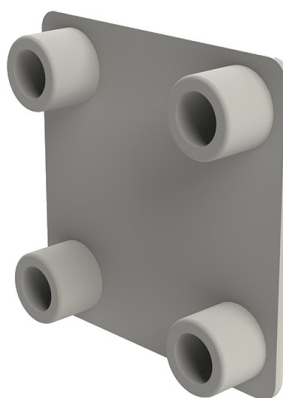
Cod.1.26.11.0009

Tappo Grigio per Profilo 40x40
Grey Cap of Profile 40x40

Cod.1.26.12.0013

Tappo Nero per Profilo 40x40
Black Cap of Profile 40x40

Tipo di materiale: Poliammide
Type of material: Polyamide



Cod.1.01.02.0099 Profilo 40x40 1 Cava
Profile 40x40 1 Groove

- Flessione
- Flexion
- Punto di inerzia Ix cm⁴ 7.3 Iy cm⁴ 6.7
- Point of inertia

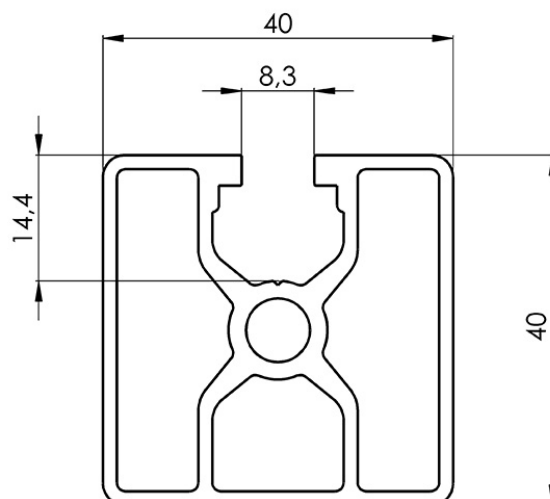
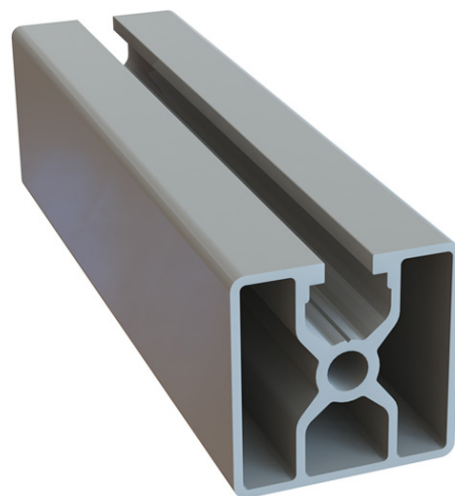
- Momento di resistenza wx cm³ 3.6 wy cm³ 3.35
- Point of hardness

- Sezione 435 mm²
- Section

- Peso 1,19Kg/mt
- Weight

- Finitura standard Anodizzato Argento
- Standard finishing Silver Anodized

- Lunghezza barra 6000 mm
- Bar lenght 6000 mm



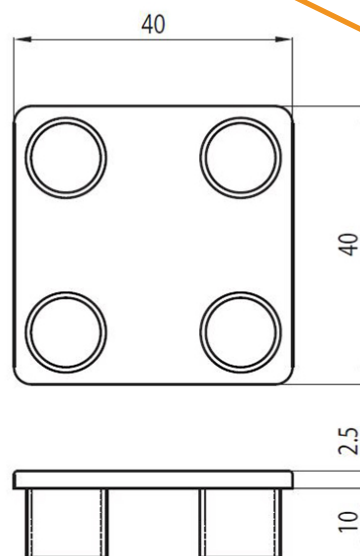
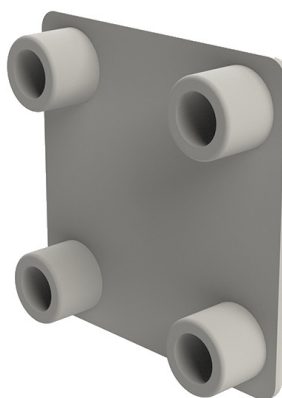
Cod.1.26.11.0009

Tappo Grigio per Profilo 40x40
Grey Cap of Profile 40x40

Cod.1.26.12.0013

Tappo Nero per Profilo 40x40
Black Cap of Profile 40x40

Tipo di materiale: Poliammide
Type of material: Polyammide



Chapt.2 page.4 **Structural profiles**

Cod.1.01.02.0028 Profilo 40x80 Leggero
Profile 40x80 Light

- Flessione
- Flexion
- Punto di inerzia Ix cm⁴ 55.7 Iy cm⁴ 15.04
- Point of inertia

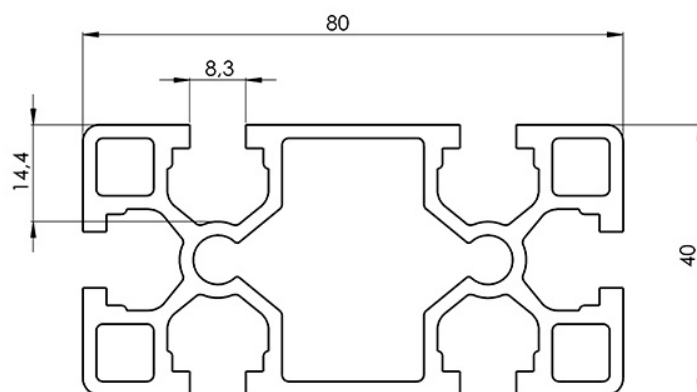
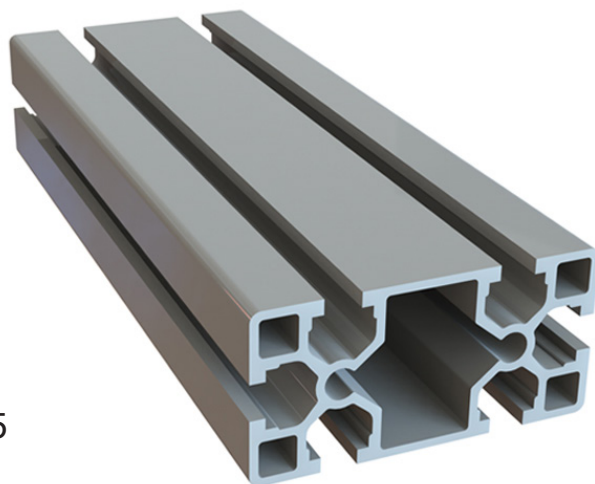
- Momento di resistenza wx cm³ 13.95 wy cm³ 7.55
- Point of hardness

- Sezione 843 mm²
- Section

- Peso 2.3Kg/mt
- Weight

- Finitura standard Anodizzato Argento
- Standard finishing Silver Anodized

- Lunghezza barra 6000 mm
- Bar lenght 6000 mm



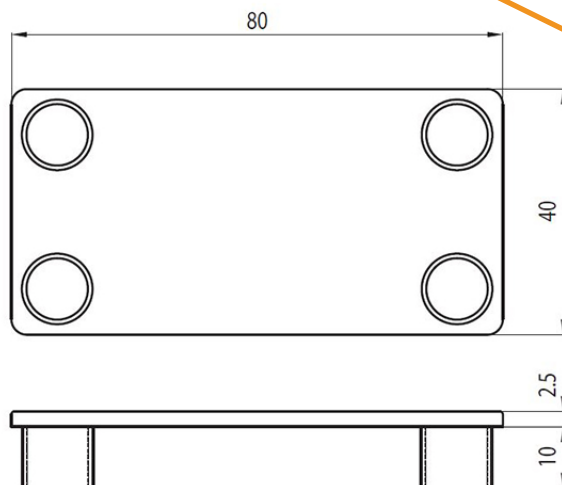
Cod.1.26.11.0044

Tappo Grigio per Profilo 40x80
Grey Cap of Profile 40x80

Cod.1.26.12.0048

Tappo Nero per Profilo 40x80
Black Cap of Profile 40x80

Tipo di materiale: Poliammide
Type of material: Polyamide



Cod.1.01.02.0100 Profilo 40x80 Semichiuso
 Profile 40x80 Semi-closed

- Flessione
- Flexion
- Punto di inerzia Ix cm⁴ 49.2 Iy cm⁴ 13.6
- Point of inertia

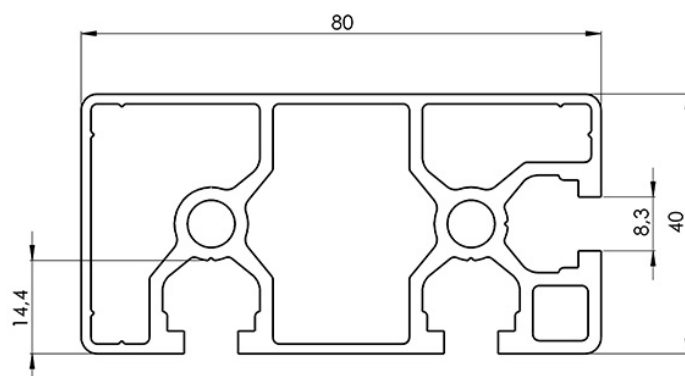
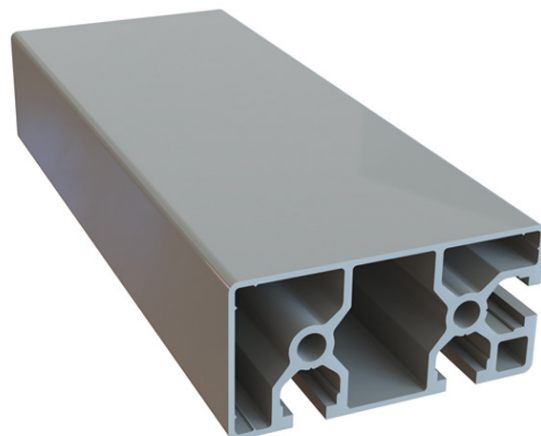
- Momento di resistenza wx cm³ 12.2 wy cm³ 6.8
- Point of hardness

- Sezione 765 mm²
- Section

- Peso 2.09Kg/mt
- Weight

- Finitura standard Anodizzato Argento
- Standard finishing Silver Anodized

- Lunghezza barra 6000 mm
- Bar lenght 6000 mm



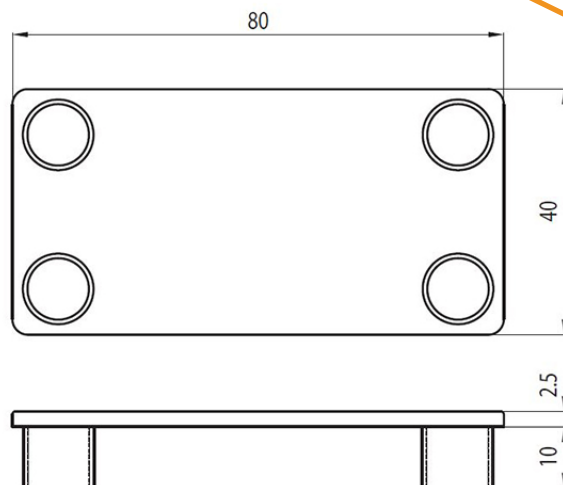
Cod.1.26.11.0044

Tappo Grigio per Profilo 40x80
 Grey Cap of Profile 40x80

Cod.1.26.12.0048

Tappo Nero per Profilo 40x80
 Black Cap of Profile 40x80

Tipo di materiale: Poliammide
 Type of material: Polyamide



Cod.1.01.02.0101 Profilo 80x80 Leggero
Profile 80x80 Light

- Flessione
- Flexion
- Punto di inerzia $I_x \text{ cm}^4 103.7 I_y \text{ cm}^4 103.7$
- Point of inertia

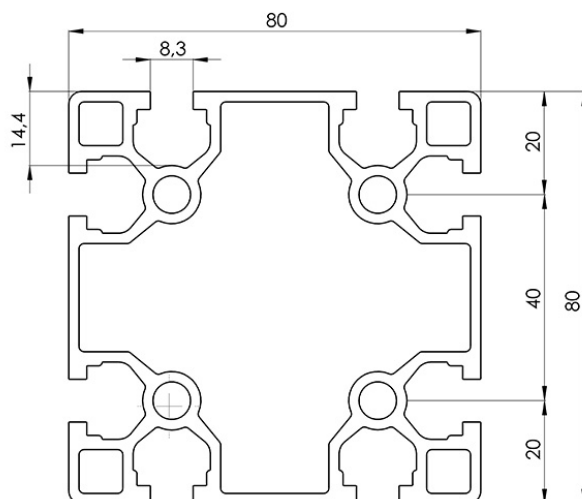
- Momento di resistenza $w_x \text{ cm}^3 25.9 w_y \text{ cm}^3 25.9$
- Point of hardness

- Sezione 1340 mm^2
- Section

- Peso 3.6 Kg/mt
- Weight

- Finitura standard Anodizzato Argento
- Standard finishing Silver Anodized

- Lunghezza barra 6000 mm
- Bar lenght 6000 mm



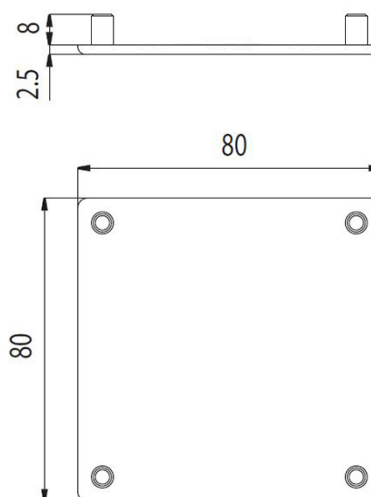
Cod.1.26.11.0045

Tappo Grigio per Profilo 80x80
Grey Cap of Profile 80x80

Cod.1.26.12.0049

Tappo Nero per Profilo 80x80
Black Cap of Profile 80x80

Tipo di materiale: Poliammide
Type of material: Polyamide



Cod.1.01.02.0093 Profilo 80x80 Pesante
Profile 80x80 Heavy

- Flessione
- Flexion
- Punto di inerzia $I_x \text{ cm}^4 140 \text{ } I_y \text{ cm}^4 140$
- Point of inertia

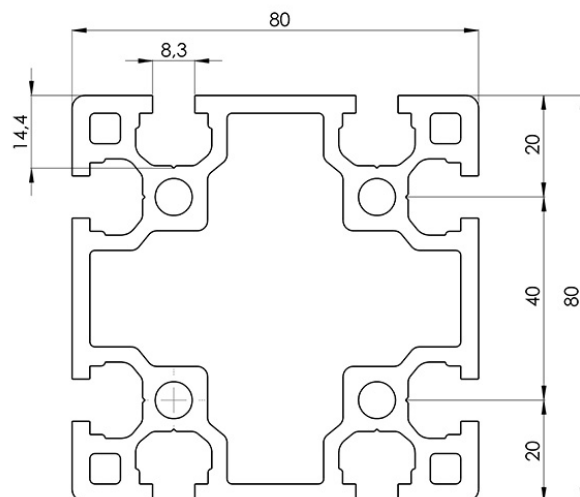
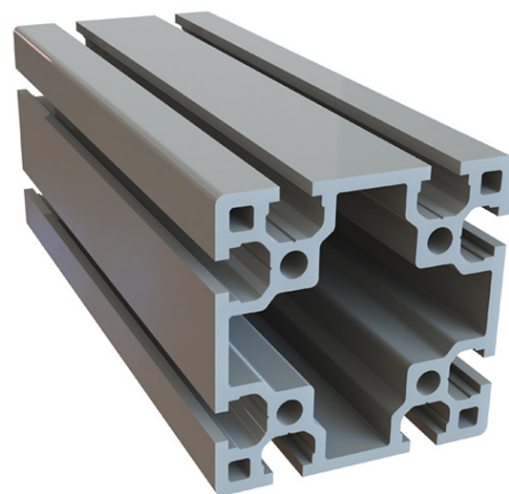
- Momento di resistenza $w_x \text{ cm}^3 35 \text{ } w_y \text{ cm}^3 35$
- Point of hardness

- Sezione 1865 mm^2
- Section

- Peso 5.05 Kg/mt
- Weight

- Finitura standard Anodizzato Argento
- Standard finishing Silver Anodized

- Lunghezza barra 6000 mm
- Bar lenght 6000 mm



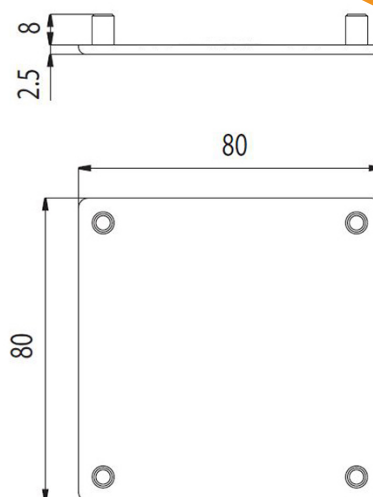
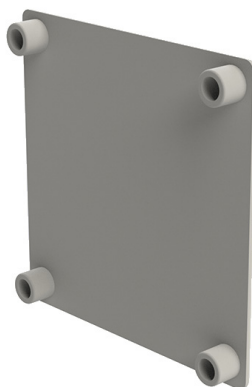
Cod.1.26.11.0045

Tappo Grigio per Profilo 80x80
Grey Cap of Profile 80x80

Cod.1.26.12.0049

Tappo Nero per Profilo 80x80
Black Cap of Profile 80x80

Tipo di materiale: Poliammide
Type of material: Polyammide



Cod.1.01.02.0172 Profilo 80x120
Profile 80x120

- Flessione
- Flexion
- Punto di inerzia $I_x \text{ cm}^4$ 408.88 $I_y \text{ cm}^4$ 201.00
- Point of inertia

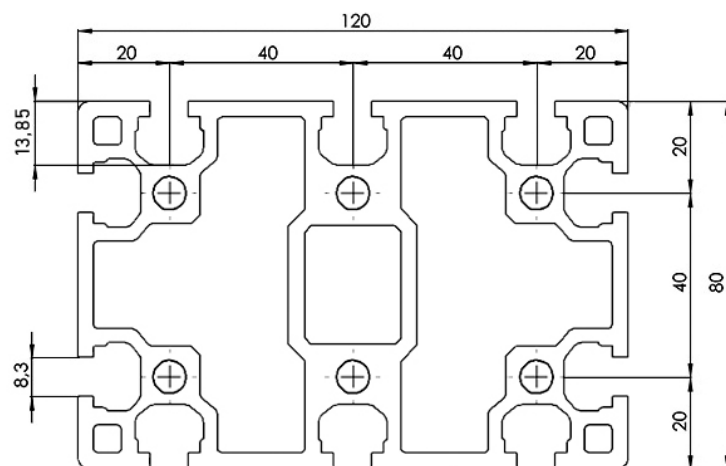
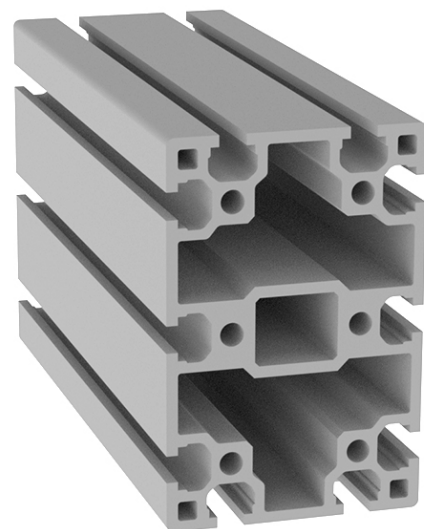
- Momento di resistenza $w_x \text{ cm}^3$ 68.15 $w_y \text{ cm}^3$ 50.25
- Point of hardness

- Sezione 2695 mm^2
- Section

- Peso 7.28 Kg/mt
- Weight

- Finitura standard Anodizzato Argento
- Standard finishing Silver Anodized

- Lunghezza barra 6000 mm
- Bar lenght 6000 mm



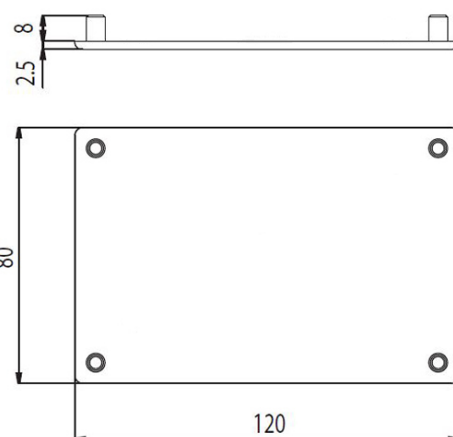
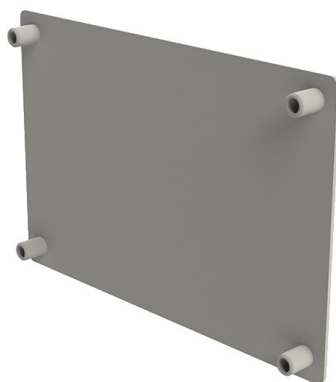
Cod.1.26.11.0046

Tappo Grigio per Profilo 80x120
Grey Cap of Profile 80x120

Cod.1.26.12.0050

Tappo Nero per Profilo 80x120
Black Cap of Profile 80x120

Tipo di materiale: Poliammide
Type of material: Polyamide





Capitolo 3 - Chapter 3

Accessori per profili cava 8

Accessories for profiles groove 8

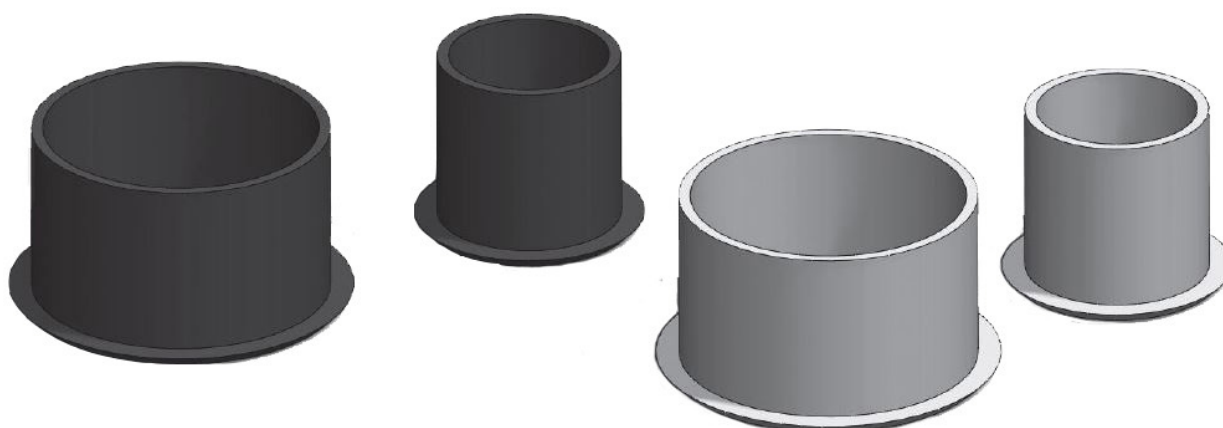
Chiusure per profili - Gripping accessories for profiles

Accessori di fissaggio - Fixing accessories

Giunzioni - Joints

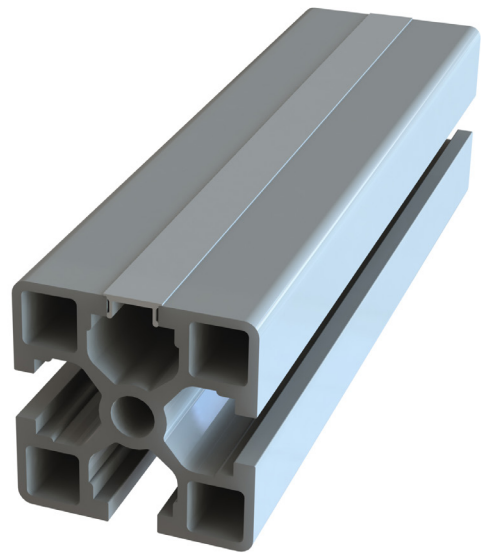
Tappi chiudi foro (in poliammide)
Caps for holes (in polyammide)

Codice tappo nero Code black cap	Diametro tappo Cap diameter	Codice tappo grigio Code grey cap
1.26.12.0032	Ø8	1.26.11.0069
1.26.12.0031	Ø9	1.26.11.0026
1.26.12.0043	Ø10	1.26.11.0042
1.26.12.0042	Ø12	1.26.11.0028
1.26.12.0034	Ø14	1.26.11.0041

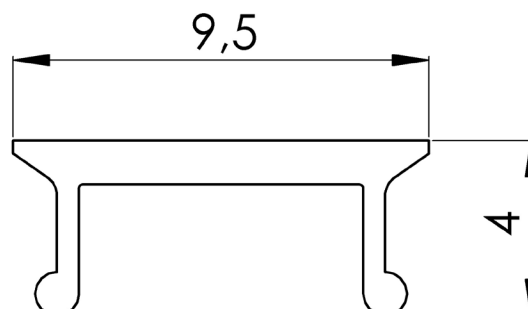


Profilo chiusura cava (alluminio anodizzato)
Profiles for groove capping (anodized aluminum)

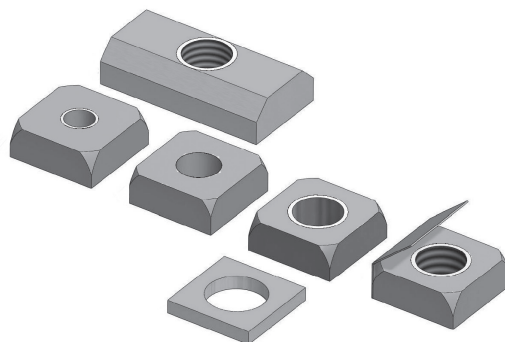
Codice Code	Tipo profilo Profile type
1.26.11.0047	Alluminio Alluminium



- 1.26.11.0047** - Guarnizione di chiusura rigida per profili con cava da 8mm *fornitura in strisce L=3000mm, in alluminio anodizzato
 - Hard end gasket for 8mm groove profiles *supplied in stripes L=3000mm, anodized aluminium



Dadi Quadri (acciaio zincato) Square Nuts (zinc steel)

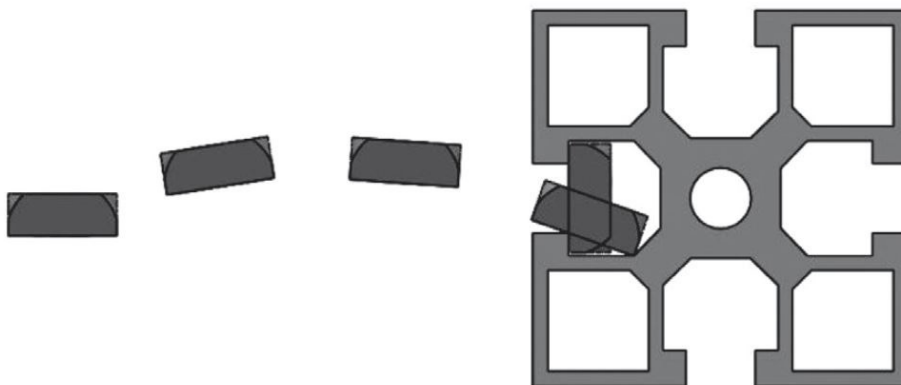
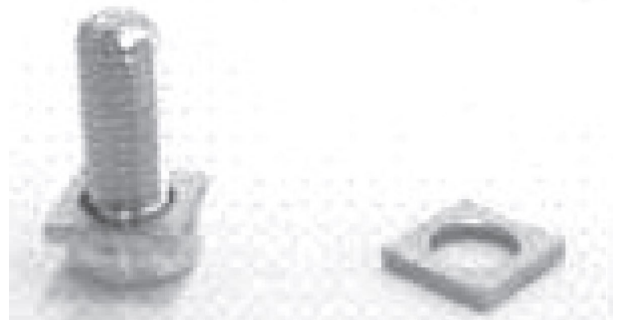


Codice Code	Dado Nut
1.21.20.0002 1.21.20.0003	M4 M4 con molla M4 with spring
1.21.20.0015 1.21.20.0010	M5 M5 con molla M5 with spring
1.21.20.0016 1.21.20.0011	M6 M6 con molla M6 with spring
1.21.20.0004 1.29.21.0008	M8 M8 Inox M8 Stainless
1.21.20.0005	M8 con molla M8 with spring
1.29.21.0170	M8 Inox con molla M8 stainless with spring
1.21.20.0001	M8 Rettangolare M8 Rectangular (13x25)
1.28.21.0005	Rondella Quadra Square Washer (13x13)



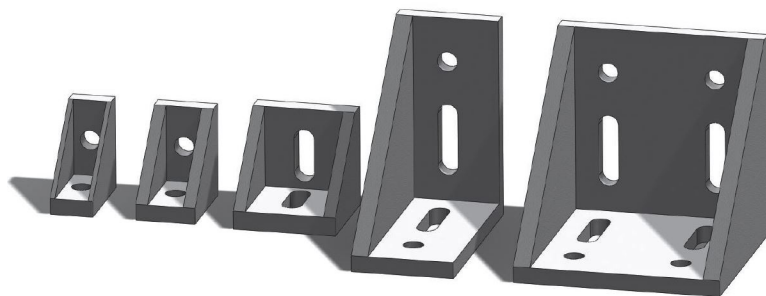
Viti M8 (acciaio zincato) M8 Screws (zinc steel)

Codice Code	Dado Nut
1.28.21.0085	M8x16
1.28.21.0086	M8x20
1.28.21.0087	M8x25

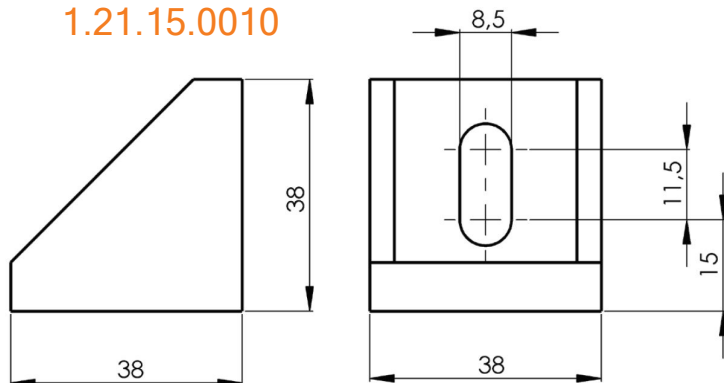


Squadrette (alluminio pressofuso) Brackets (cast aluminum)

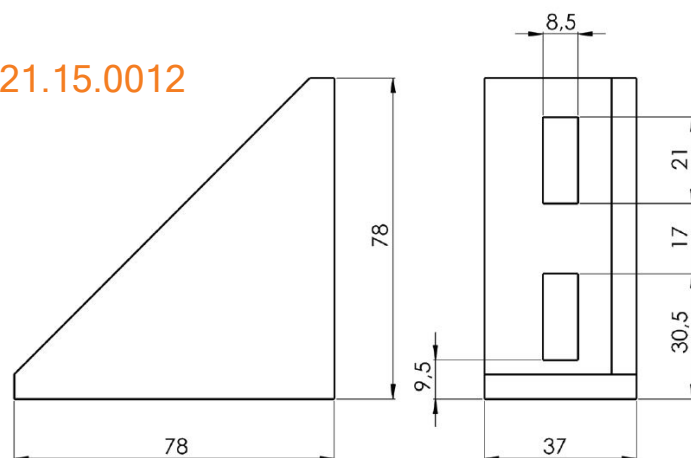
Codice Code	Squadretta Brackets
1.21.15.0010	40x40
1.21.15.0012	40x80
1.21.15.0011	80x80



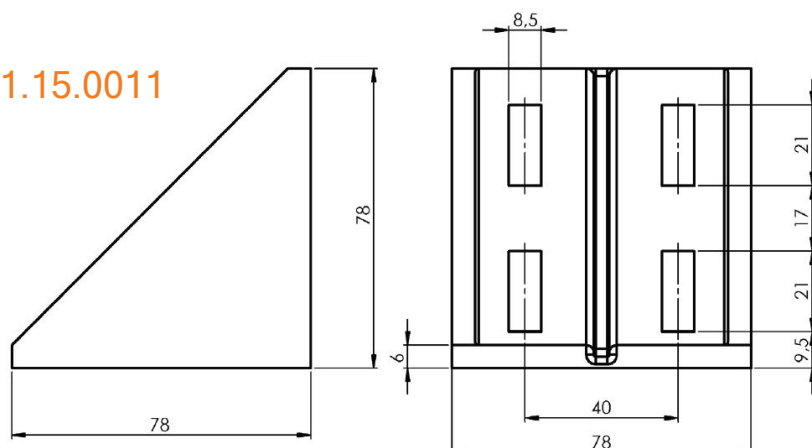
1.21.15.0010



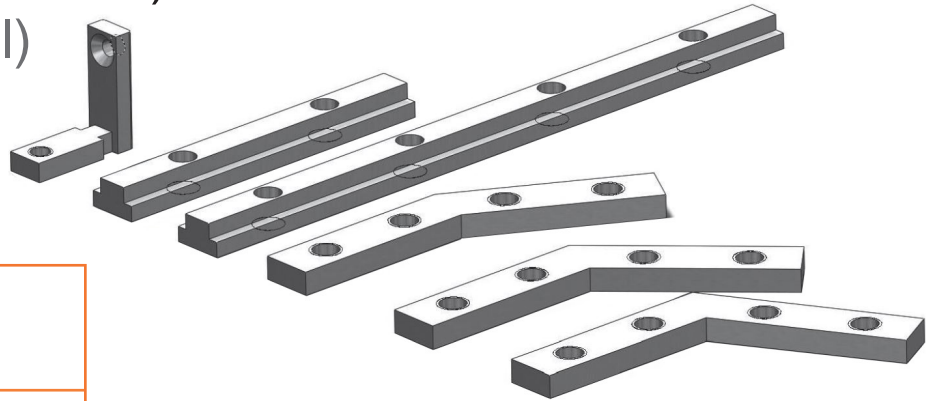
1.21.15.0012



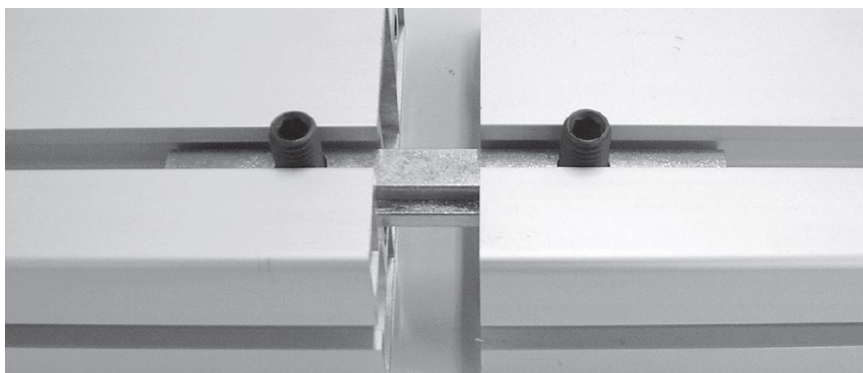
1.21.15.0011



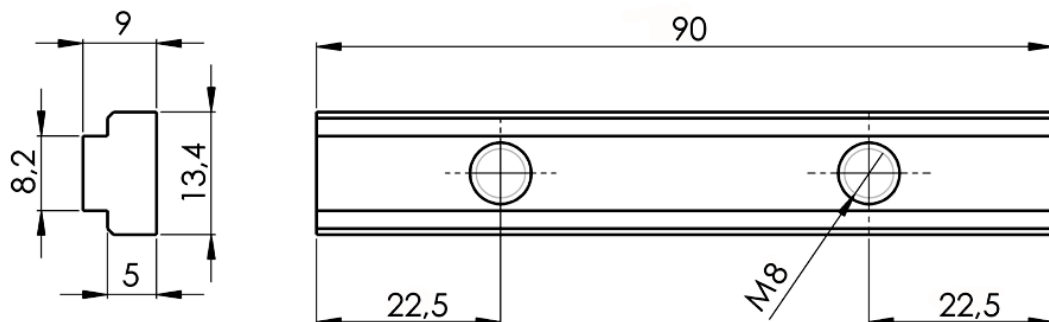
Giunti in cava (acciaio zincato)
Groove joints (zinc steel)



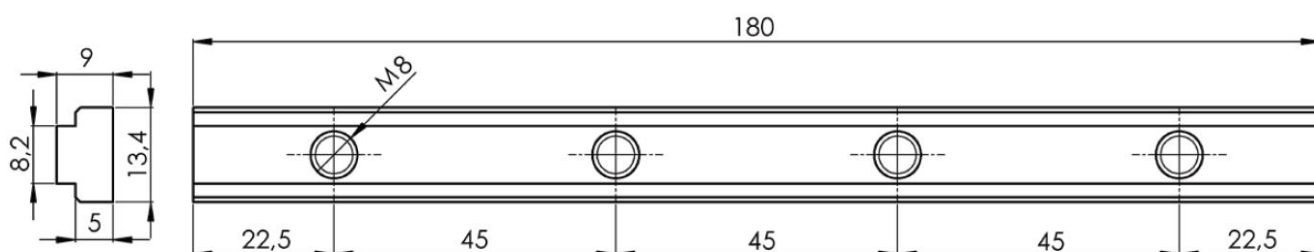
Codice Code	Giunti Joints
1.21.20.0007	Lineare L=90mm Linear L=90mm
1.21.20.0006	Lineare L=180mm Linear L=180mm
1.21.01.0004	Angolare 30° Angular 30°
1.21.01.0002	Angolare 45° Angular 45°
1.21.01.0012	Angolare 60° Angular 60°
1.21.20.0008	Giunto Ortogonale Orthogonal Joint



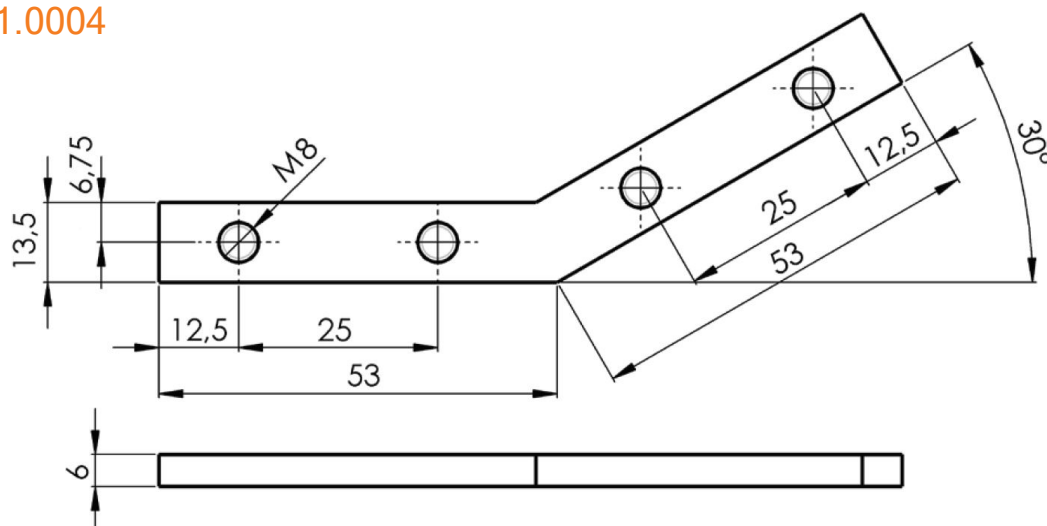
1.21.20.0007



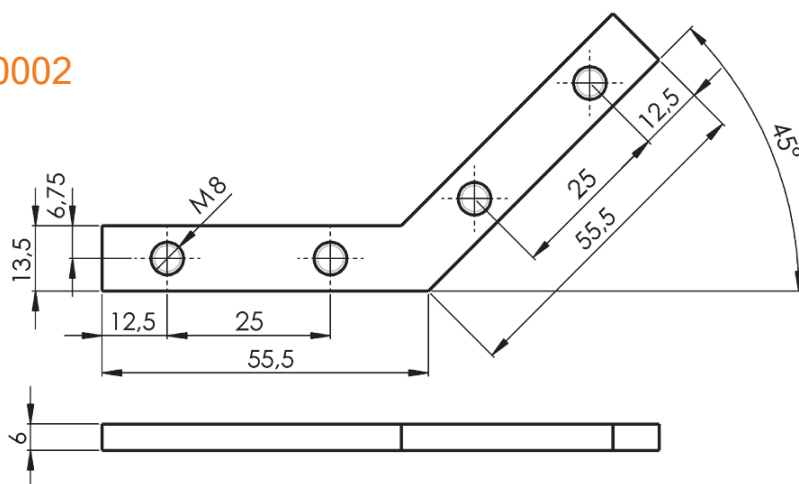
1.21.20.0006



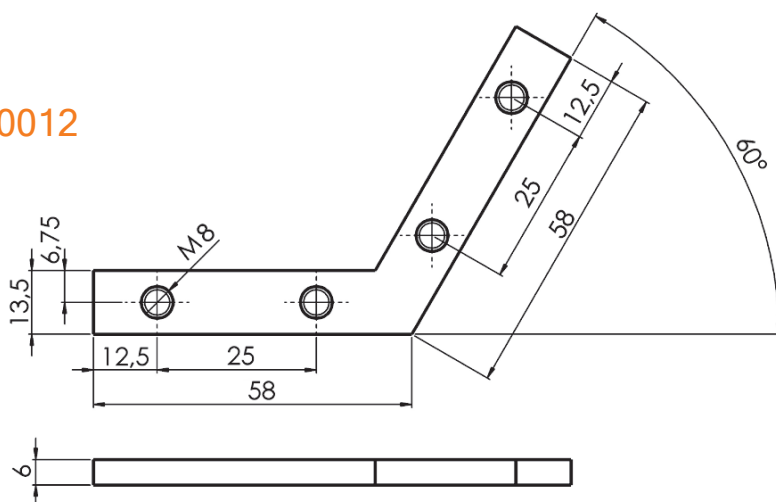
1.21.01.0004



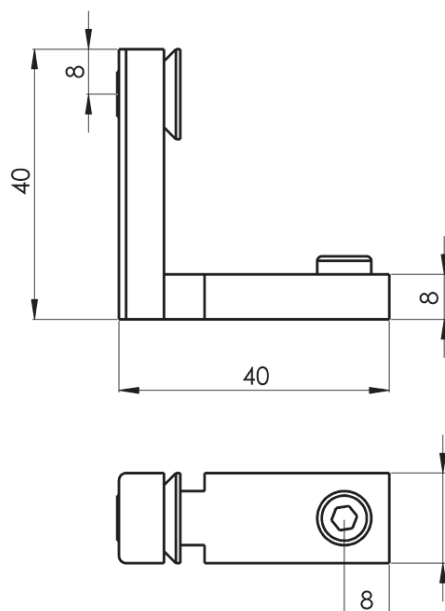
1.21.01.0002



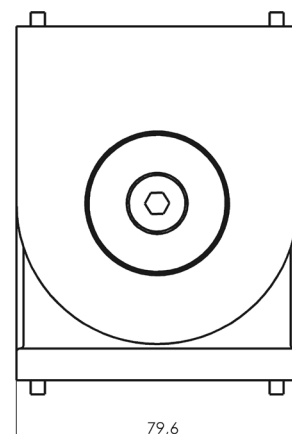
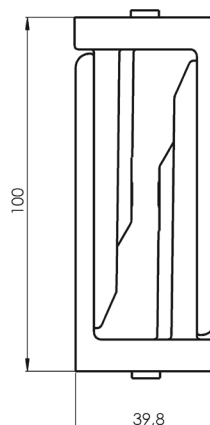
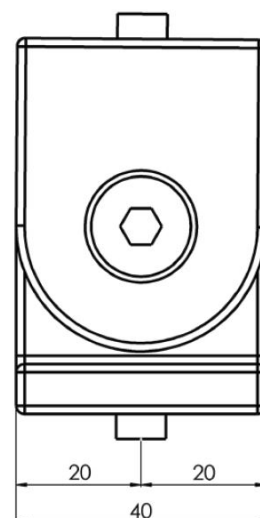
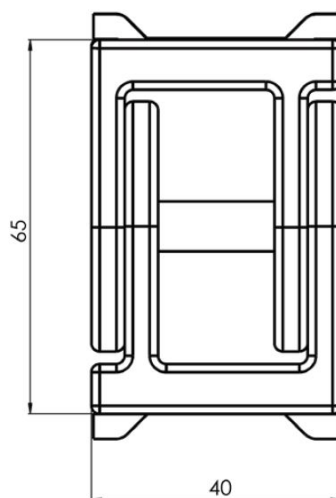
1.21.01.0012



1.21.20.0008



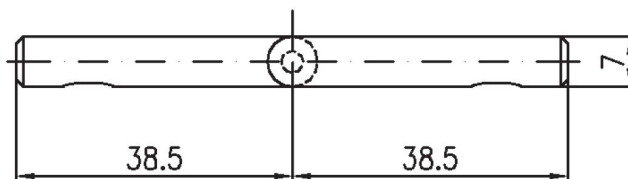
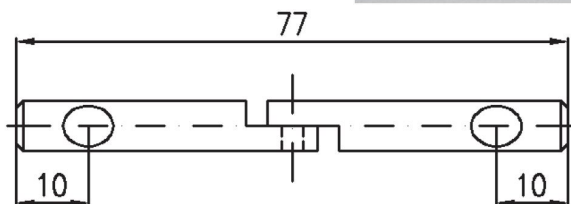
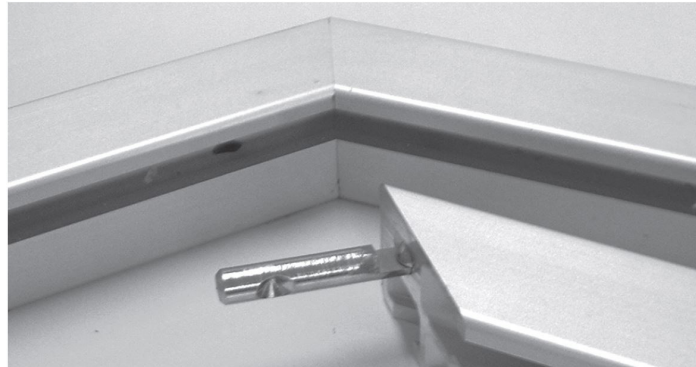
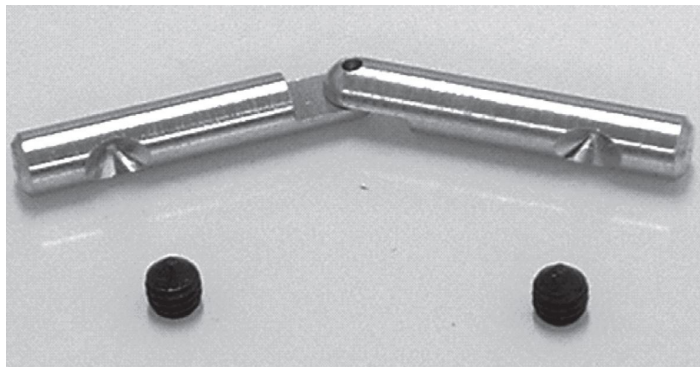
1.47.15.0007

 giunto snodato in alluminio 40x40
 40x40 aluminium loose joint


1.47.15.0008

 giunto snodato in alluminio 40x80
 40x80 aluminium loose joint

1.21.20.0009

 giunto interno in acciaio zincato
 zinc steel internal joint


1.21.21.0019

 nottolino in alluminio/acciaio/zincato
 pawl clamping in aluminium/zinc steel
